

# Westchester Library System

Raymond Beeler, AIA, LEEDap  
[rbeeler@gb-ds.com](mailto:rbeeler@gb-ds.com)  
914-693-4004

Judith Lockman, Public Library Consultant  
[judithlockman@gmail.com](mailto:judithlockman@gmail.com)  
631-909-1336


RECONSTRUCTION AND ADDITION TO THE  
**SYOSSET  
PUBLIC  
LIBRARY**

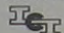


BOARD OF TRUSTEES:  
Shirley Lang, *President*  
Lorraine Trachtman, *Vice-Pres.*  
Elaine Gainer  
Reid Goldsmith  
Jane Evans

LIBRARY DIRECTOR:  
Judith Lockman

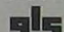
ARCHITECT:  
Raymond Beeler Architect PC

CONSTRUCTION MANAGER:  
 Park East Construction  
Corp.

GENERAL CONTRACTOR:  
 Irwin Contracting  
Inc.

PLUMBING CONTRACTOR:  
Lynbrook Plumbing  
and Heating, Inc.

MECHANICAL CONTRACTOR:  
Long Island Mechanical  
of NY, Inc.

ELECTRICAL CONTRACTOR:  
 Gordon L. Seaman,  
Inc.

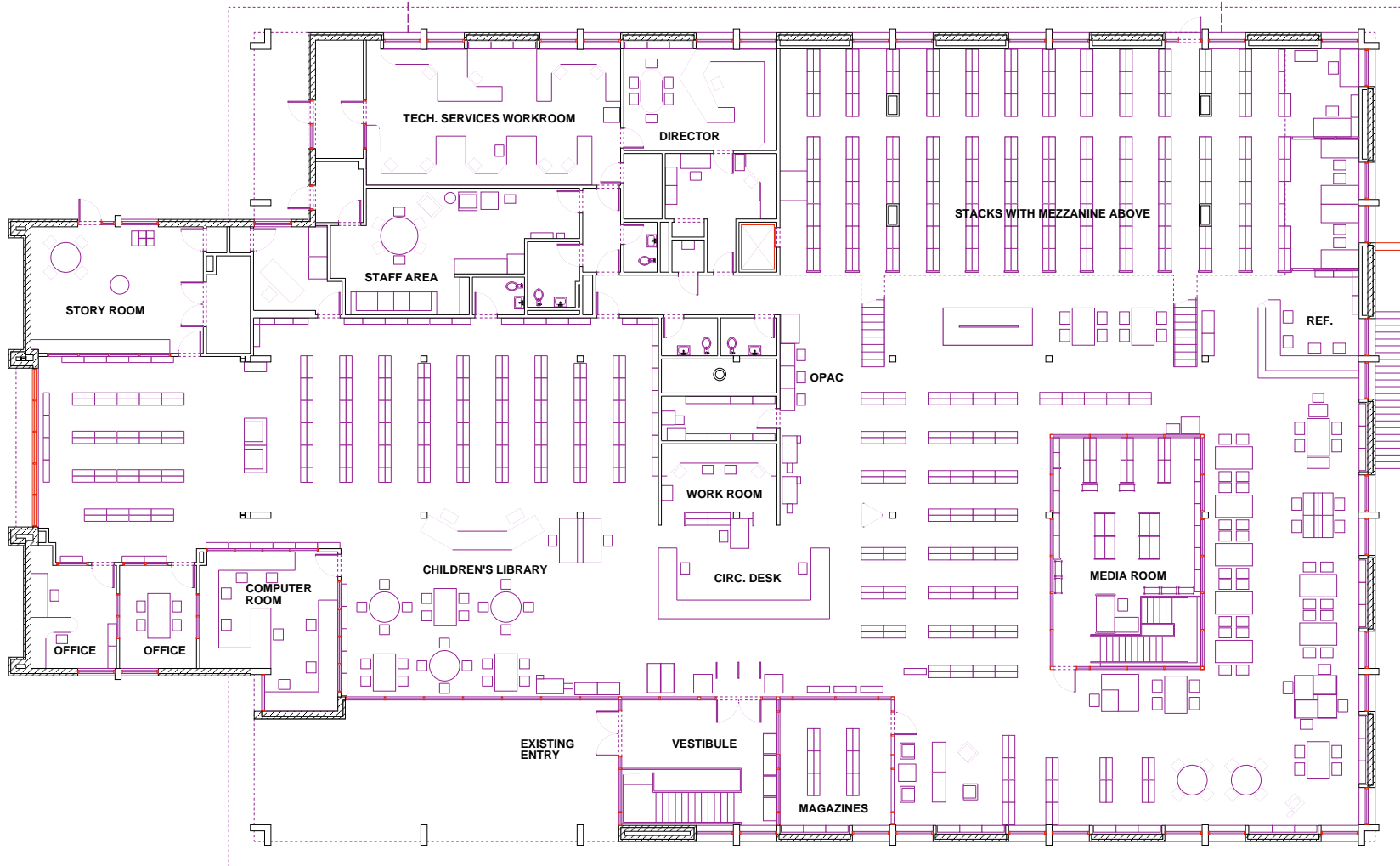


**SYOSSET**  
Public Library





FOOTPRINT OF  
PROPOSED ADDITION

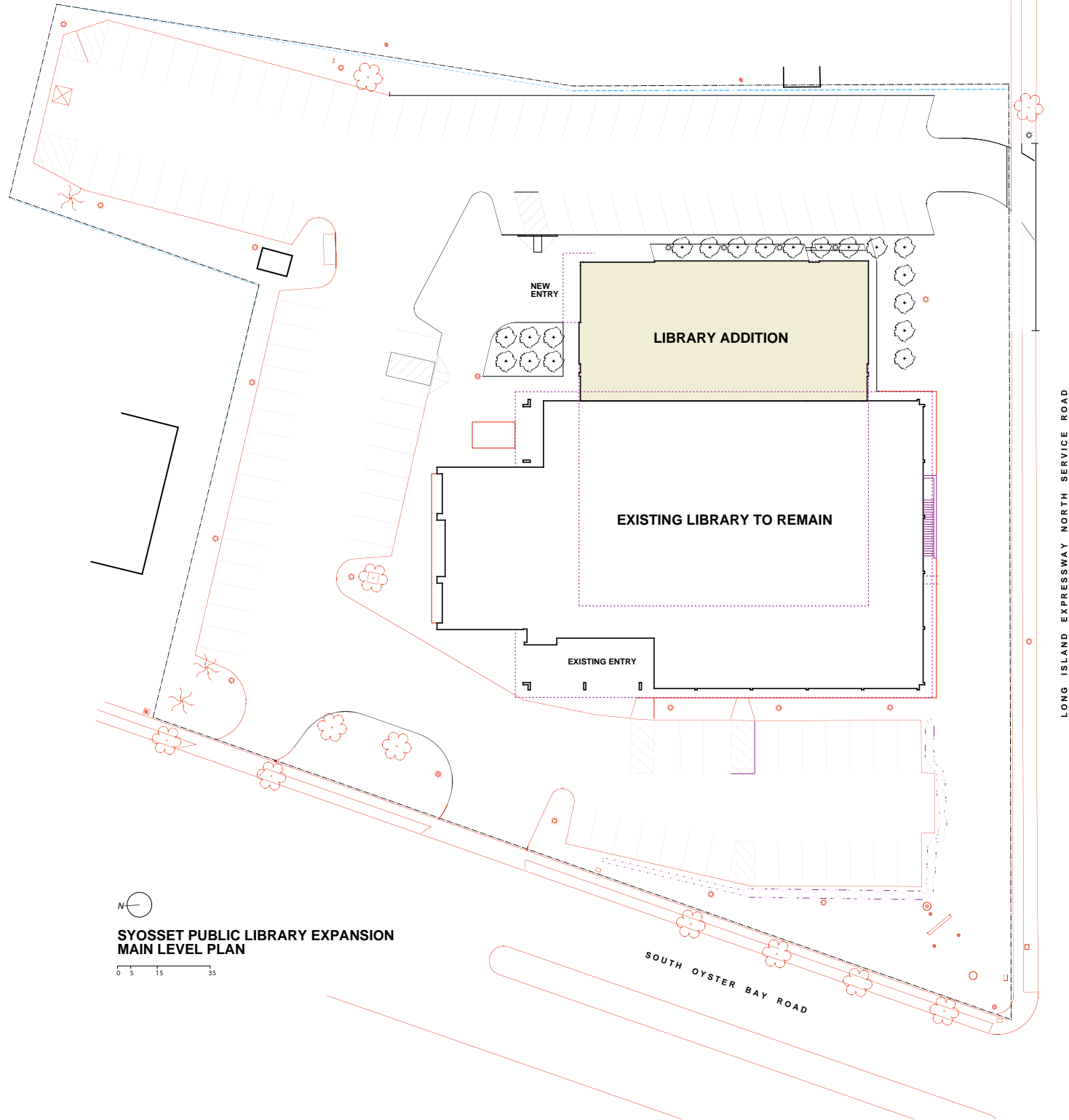


EXISTING LIBRARY  
BEFORE ALTERATIONS  
OR ADDITION

SYOSSET PUBLIC LIBRARY EXPANSION  
MAIN LEVEL PLAN - EXISTING CONDITIONS

0 5 15 35



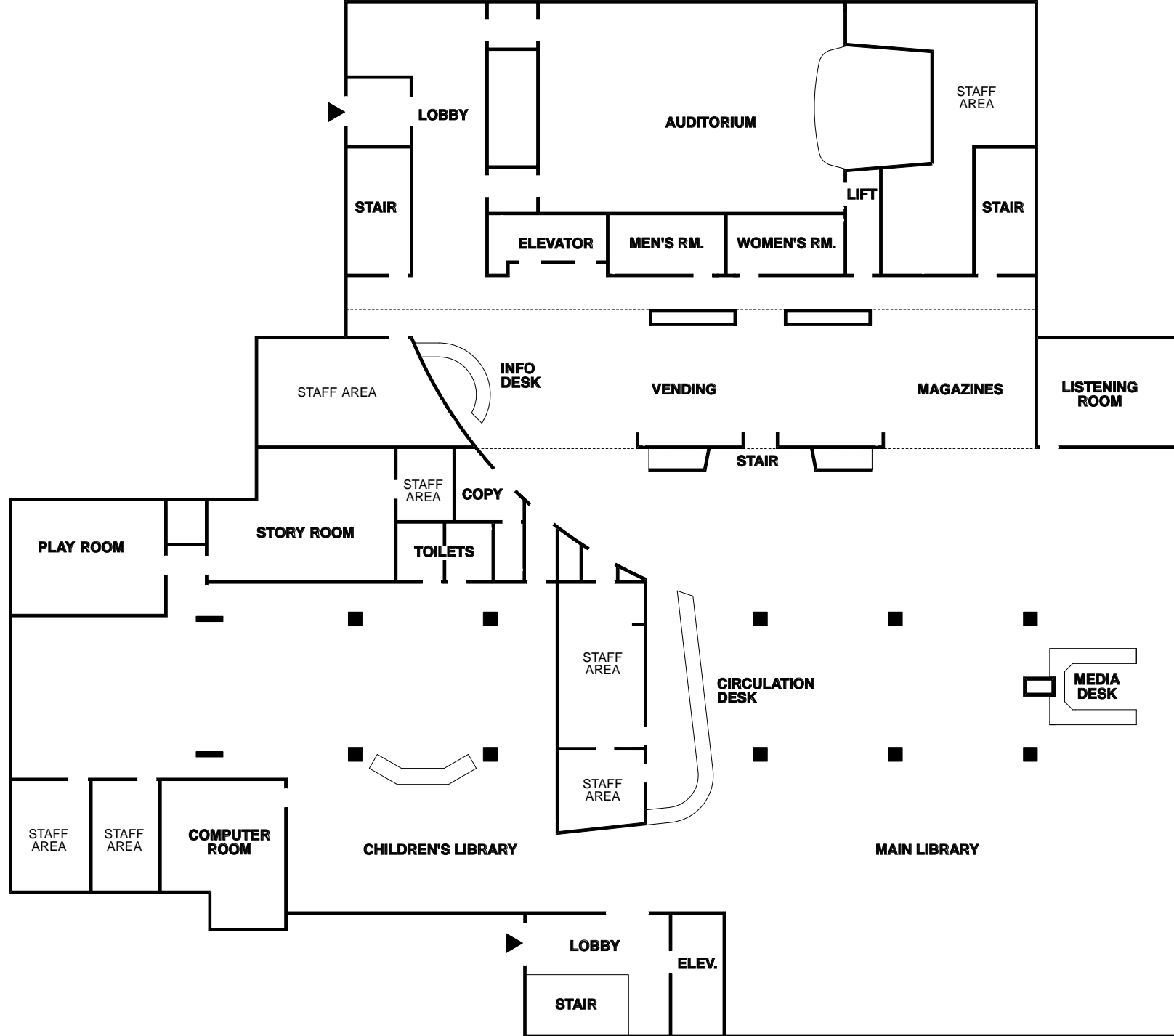


**SYOSSET PUBLIC LIBRARY EXPANSION  
MAIN LEVEL PLAN**

0 5 15 35

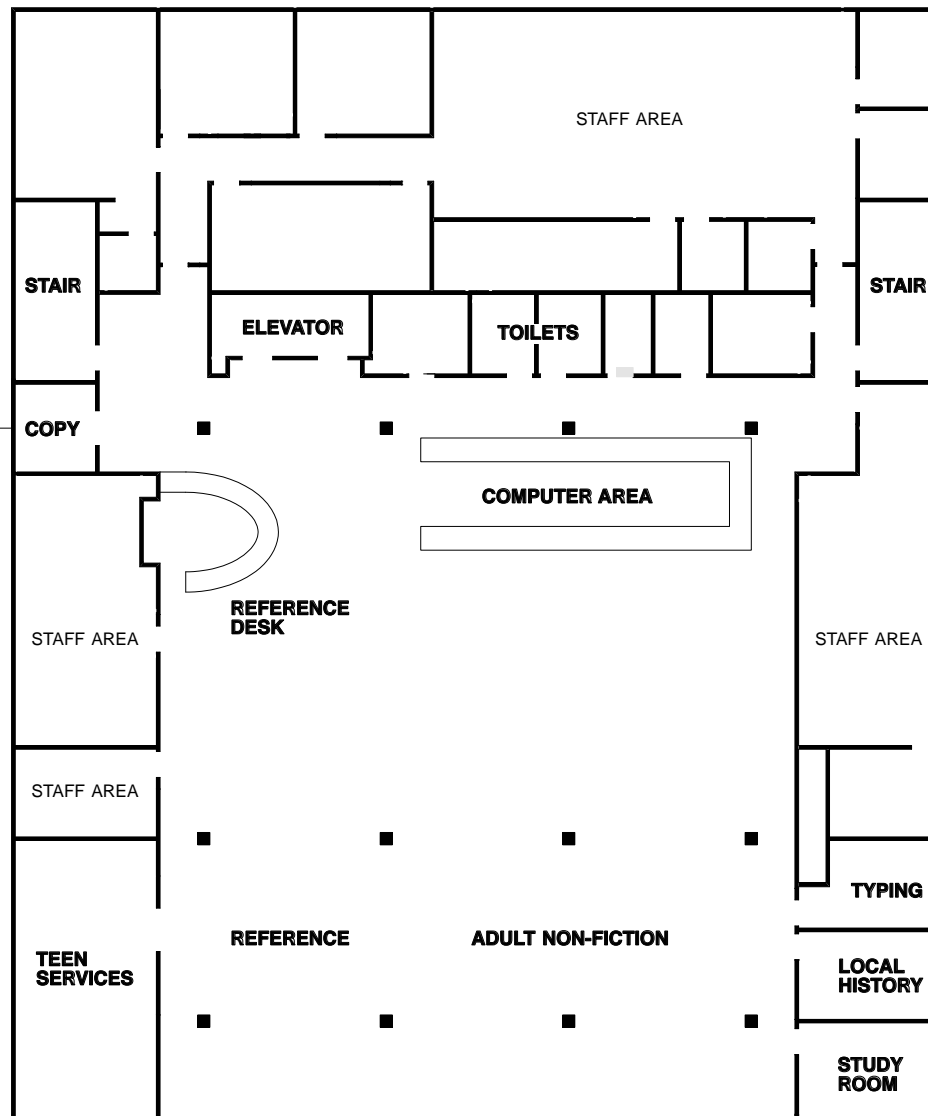
LONG ISLAND EXPRESSWAY NORTH SERVICE ROAD

SOUTH OYSTER BAY ROAD



**MAIN LEVEL**

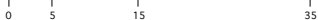




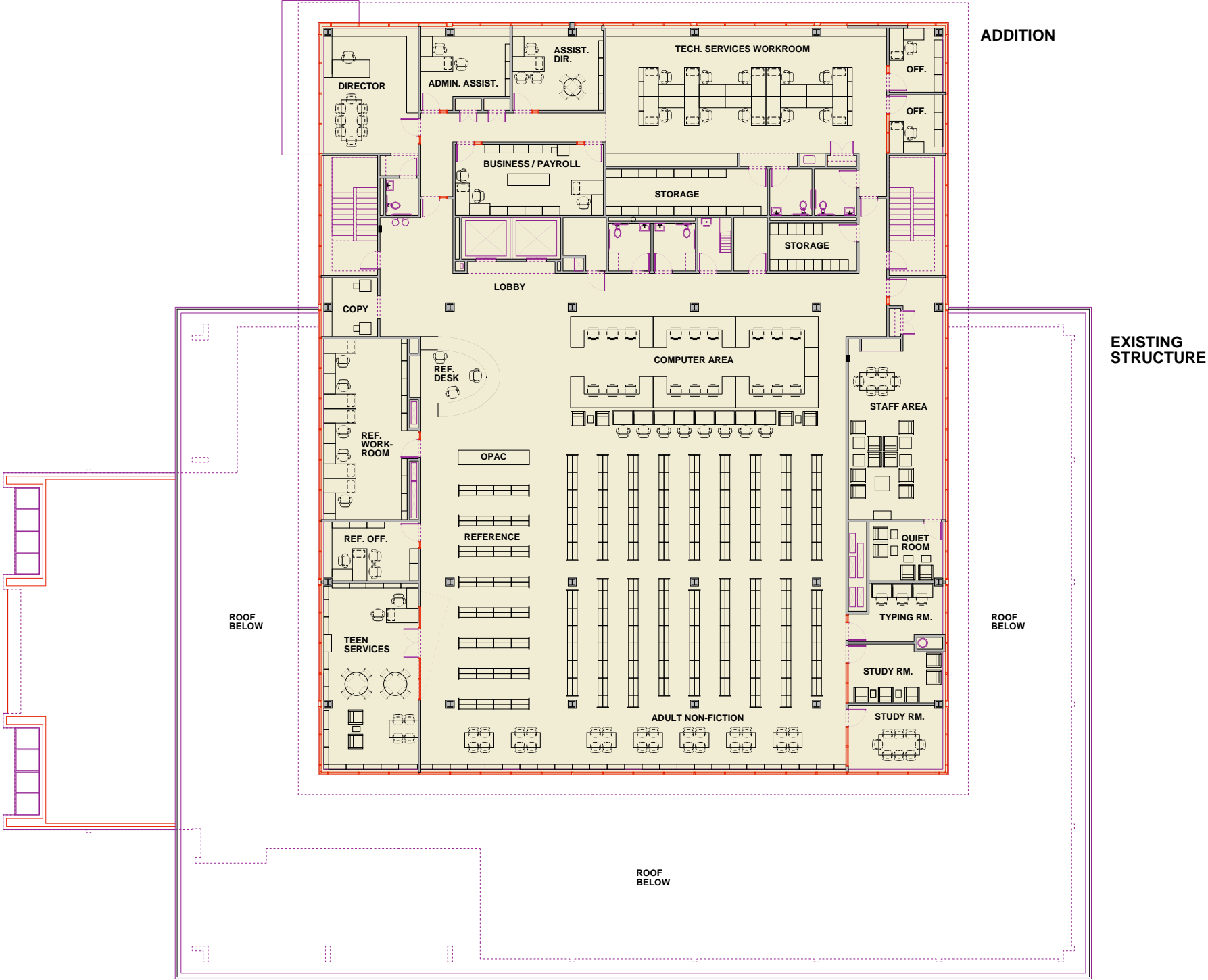
**THIRD LEVEL**



SYOSSET PUBLIC LIBRARY EXPANSION  
MAIN LEVEL PLAN

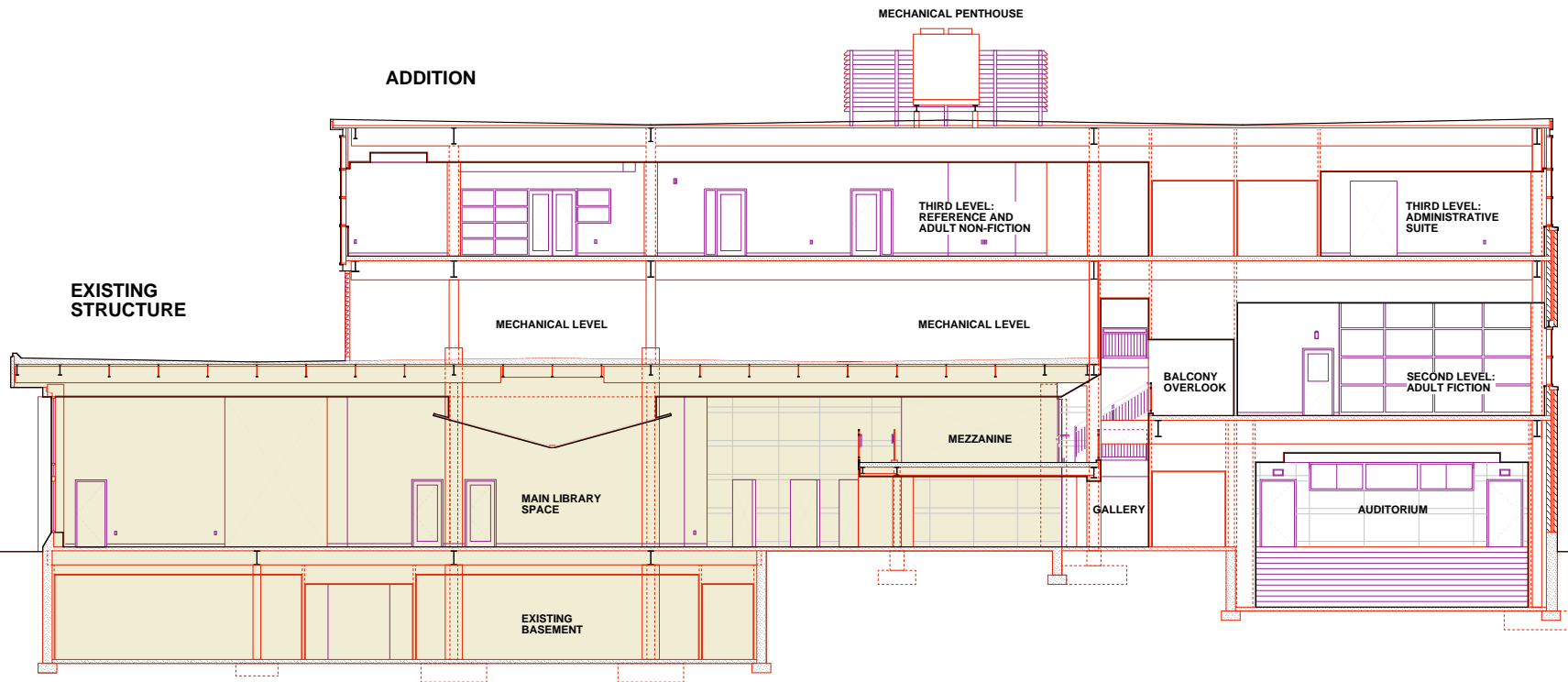






SYOSSET PUBLIC LIBRARY EXPANSION  
THIRD LEVEL PLAN





**SYOSSET PUBLIC LIBRARY EXPANSION  
SECTION**

0 5 15 35

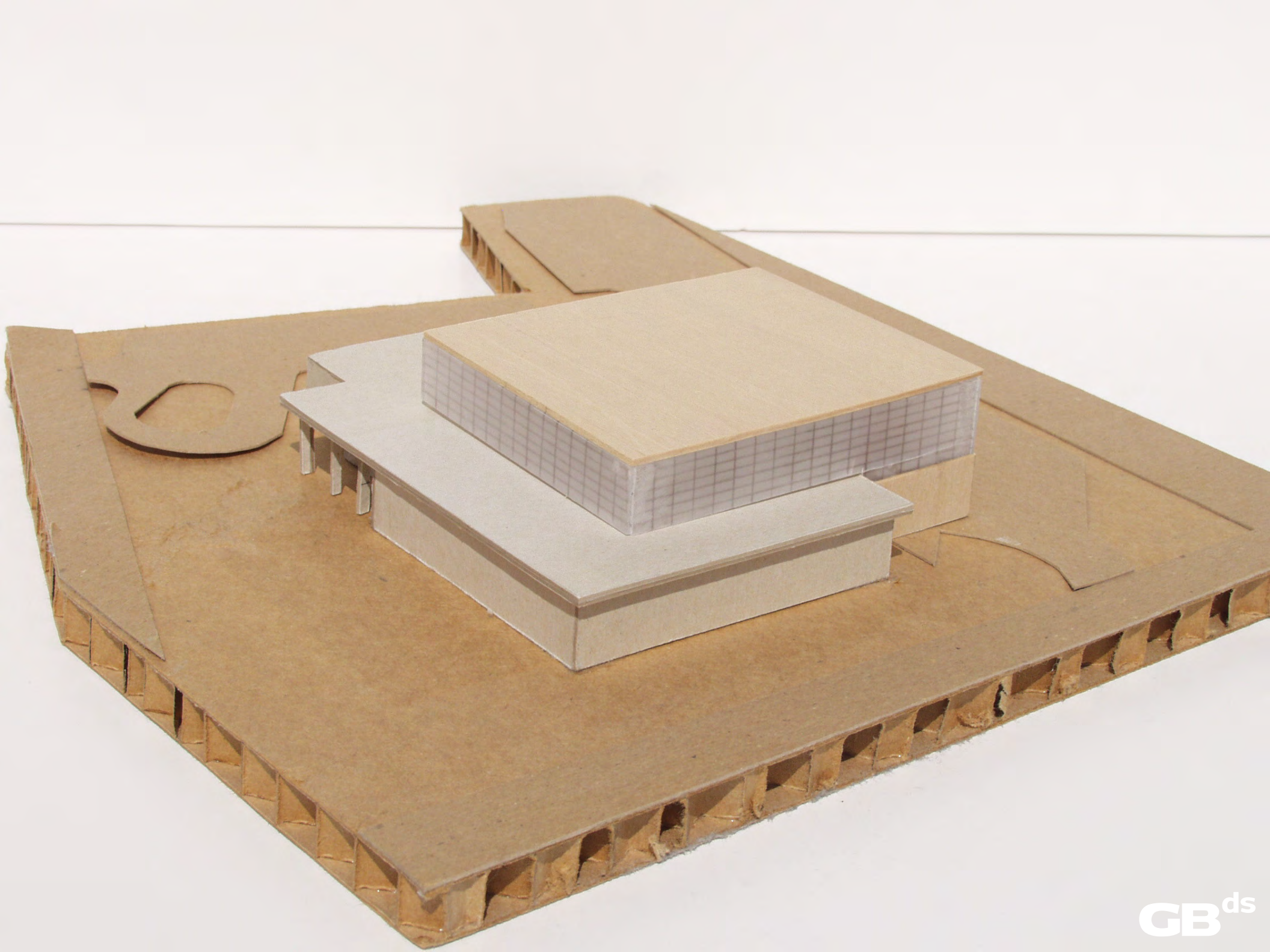




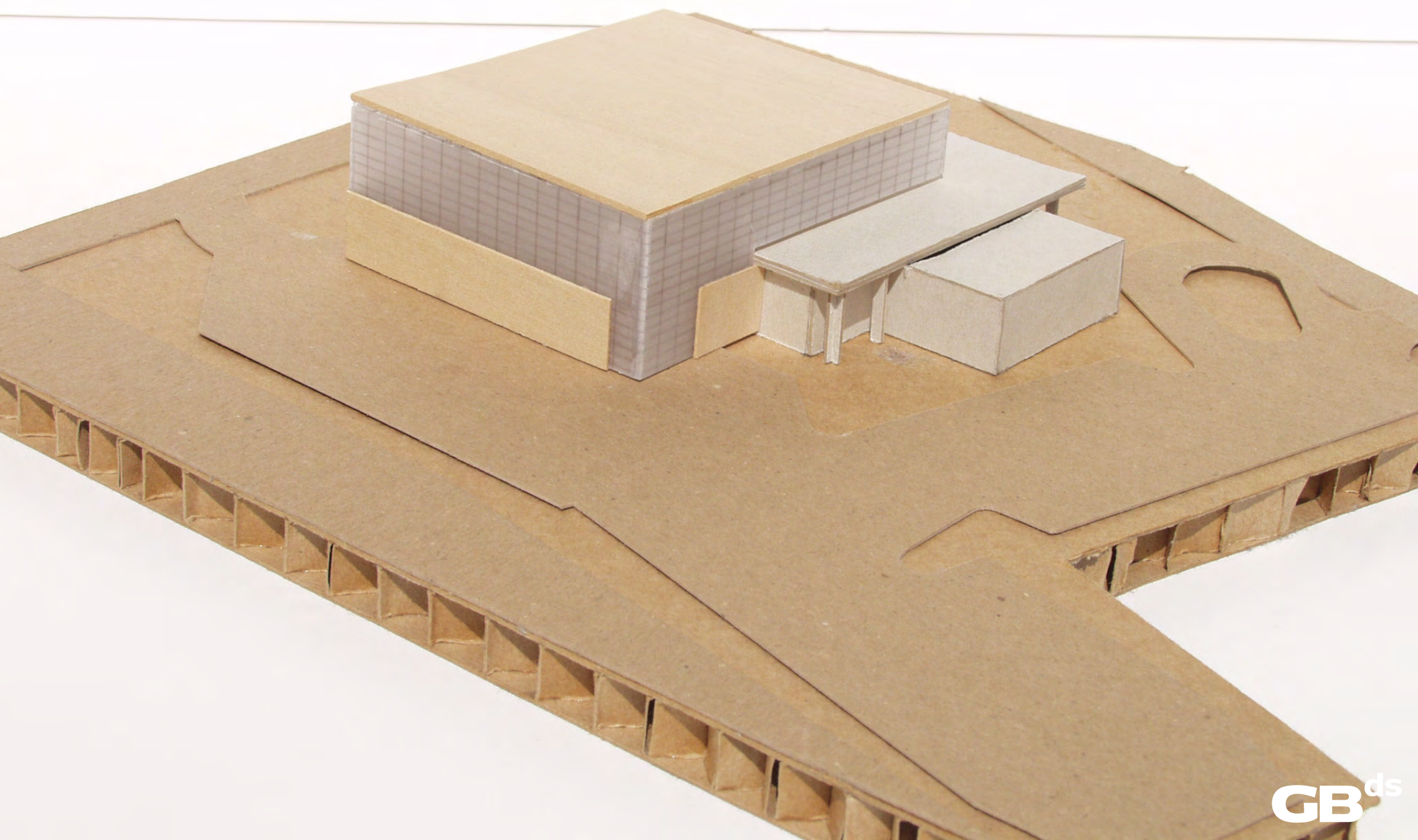
















































SYOSSET  
Public Library

























































CONTRACTOR  
ENTRANCE

CONSTRUCTION  
PARKING  
ONLY  
NO EXIT











































































# Syosset Public Library Wins 2007 Design Awards

The newly expanded and renovated Syosset Public Library garnered high praise from the American Institute of Architects (AIA) during the 2007 awards season.

Syosset Library Architect Raymond Beeler was honored by the Westchester Mid-Hudson American Institute of Architects in the annual Celebration of Architecture awards program held at the Dia Beacon Museum. Mr. Beeler was selected for a "First Honor Award for Recognition of Architectural Excellence" in the Municipal / Institutional Projects category. Only one award was given out in this category and this was one of only two "First Honor Awards" given out in the 2007 program. Judith Lockman, Syosset Library Director

praised Mr. Beeler for "designing a beautiful, comfortable building that will serve the community well for future decades."

On November 8, the Syosset Public Library project was honored at the American Institute of Architects Long Island Chapter, Annual "Archi" Awards Program. Syosset Public Library's Architect Raymond Beeler won the prestigious "Archi Award for Excellence in Architecture" in the Institutional Projects category. Only two awards were given out in this category with an exceptionally large field of submissions from the entire tri-state region. The other award, an "Archi Award Commendation" was given to the Baldwin Public Library Expansion, also by the firm of Raymond Beeler Architect.



Syosset library director Judith Lockman with library Architect Raymond Beeler.

The Syosset Library Board of Trustees chose Raymond Beeler, Architect PC for the firm's creative, functional and attractive design that more than doubled the workable space of the original 1969 building. Mr. Beeler worked closely with Structural Engineer Mike Squarzini from the renowned firm of Thornton Tomasetti to create an ingenious interior structur-

al support system to allow for all the additional space to be built above the existing building.

On acceptance of the "ARCHI" award, Judith Lockman thanked Mr. Beeler for "making our dreams come true...Over 1000 people visit Syosset Library each day. Our library is truly the cultural heart of the community."







**2007 ARCHI AWARD FOR EXCELLENCE IN ARCHITECTURE**

presented to:  
RAYMOND BEELER ARCHITECT

for:  
THE SYOSSET PUBLIC LIBRARY EXPANSION

The American Institute of Architects - Long Island Chapter

*This Award is Presented in Recognition of Outstanding Achievement in the Municipal /  
Institutional Category*



NOW  
ONLINE

NEW BLOGS  
**Business Beat**  
Local movers  
and shakers

**Real LI**  
Local real  
estate news

**TALK  
ABOUT IT**

Which are  
your favorite  
designs?



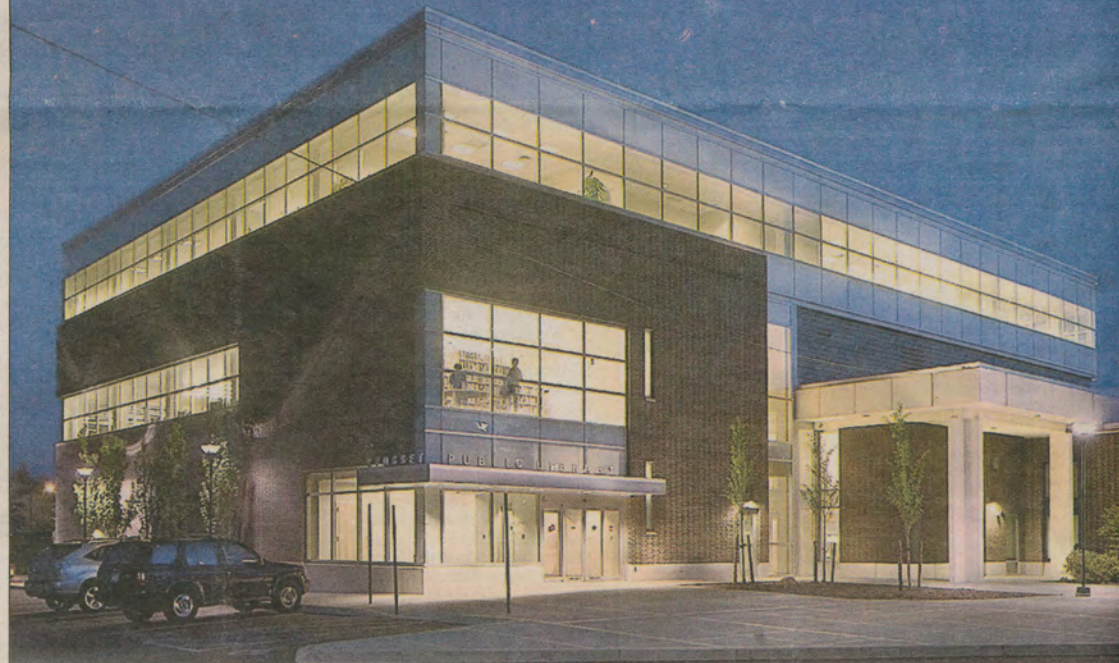
# Business

2007 ARCHITECTURE AWARDS



## And the Archi goes to...

Long Island architects' favorite creations / D2



### Municipal and institutional design

The Syosset Public Library addition by Raymond Beeler Architect,  
using the same bricks as the structure built in the '60s





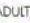









# North Bellmore Public Library Community Input Meeting

March 24<sup>th</sup>, 2015





## Existing 1st Floor Plan Departments

	CIRCULATION & LIBRARY ENTRY_740sf
	REFERENCE 445sf
	ADULT 2,560sf
	NON-FICTION
	FICTION
	READING
	MEDIA & PERIODICALS 465sf
	SEATING 305sf
	PUBLIC ACCESS COMPUTERS 375sf
	YOUNG ADULT 265sf
	CHILDREN'S AREA 1,500sf
	COMMUNITY ROOM 1,540sf





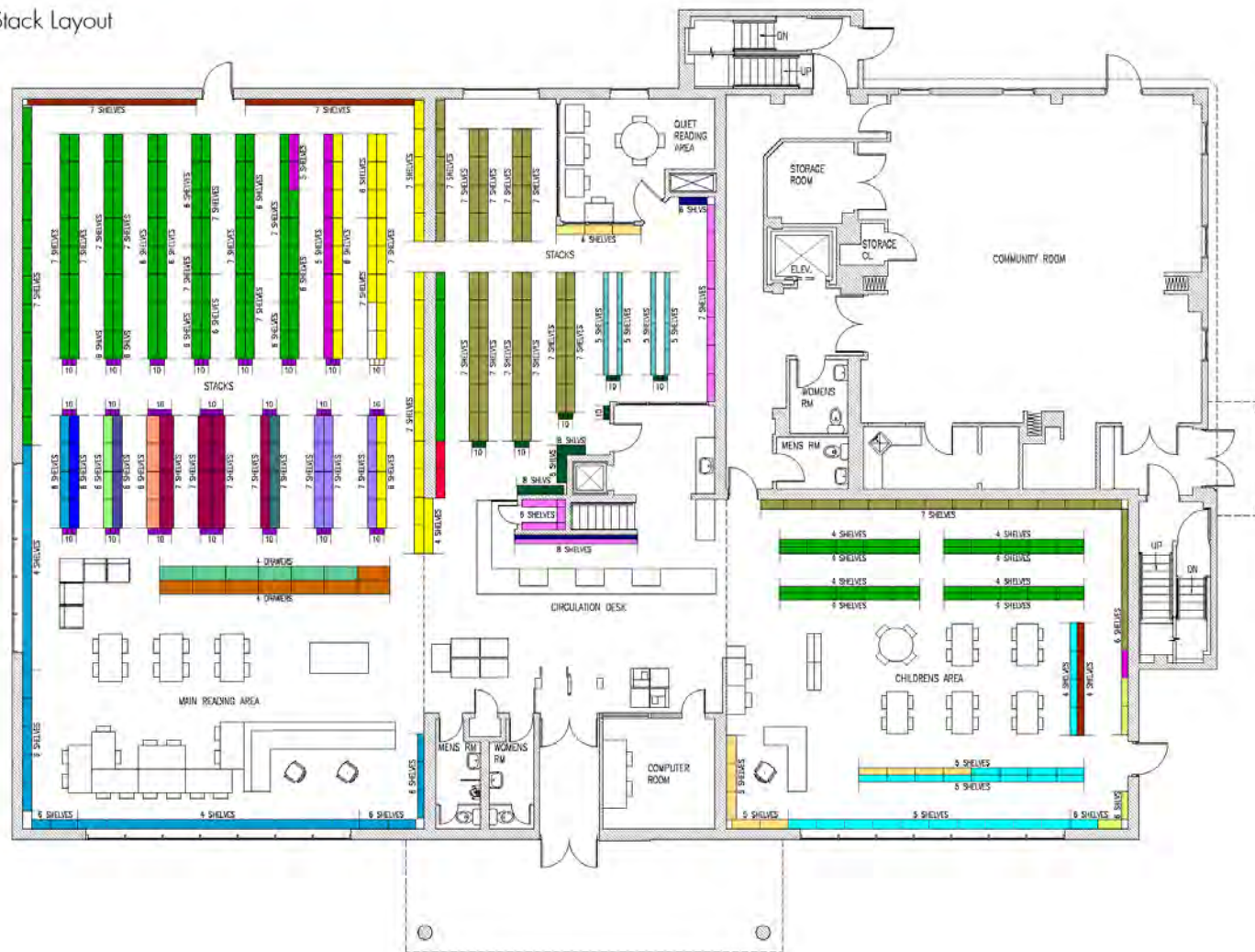
## Existing 2nd Floor Plan Departments





## Existing 1st Floor Plan & Stack Layout

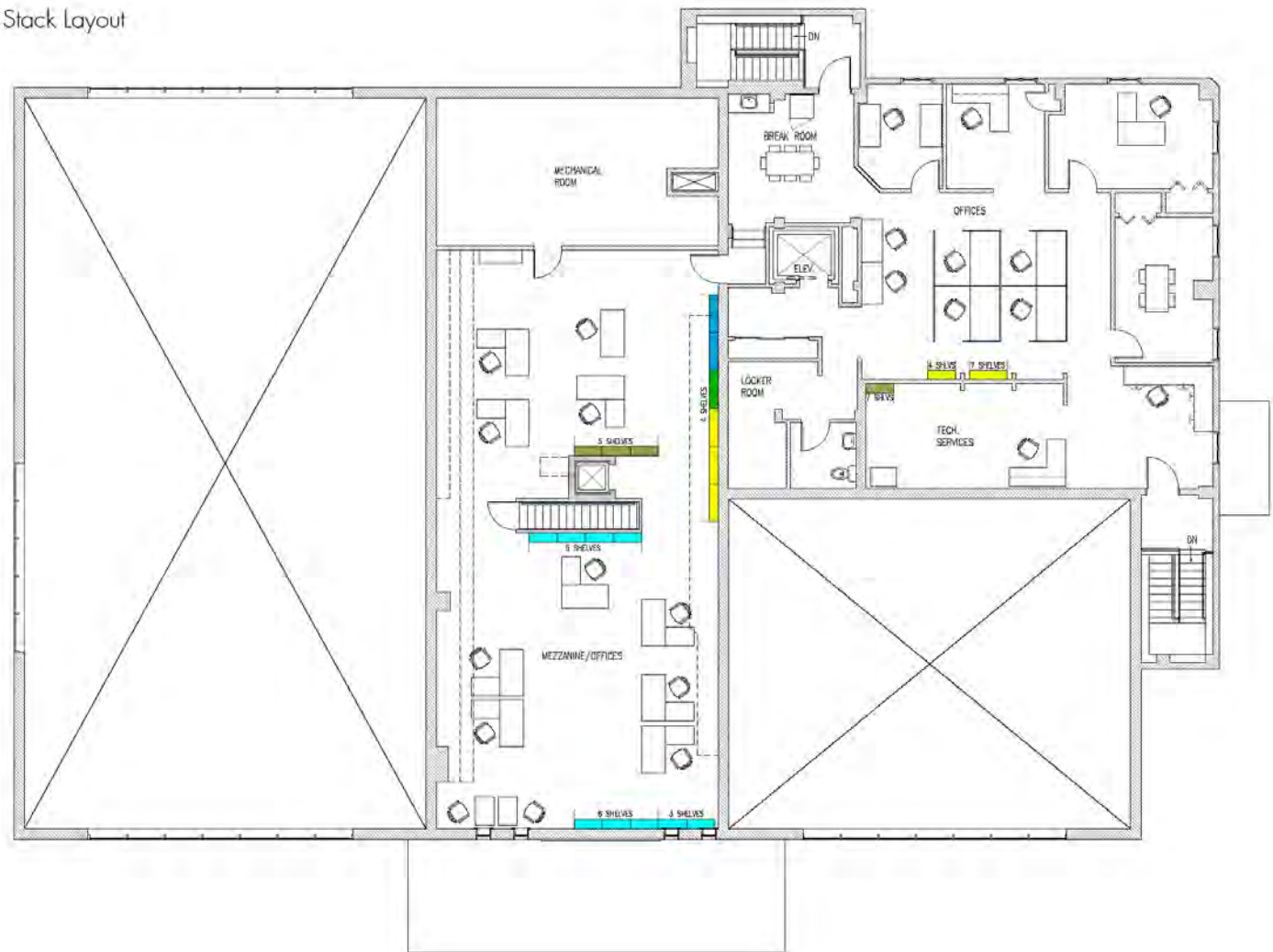
- ADULT'S SECTION**
- NONFICTION
  - FICTION
  - REFERENCE
  - BIOGRAPHY
  - YOUNG ADULT
  - LARGE TYPE
  - PLAYWAYS
  - MYSTERY
  - ROMANCE NOVEL
  - OVERSIZE
  - COLLEGE PREP
  - CAREER/RESUME
  - PARENT COLLECTION
  - LANGUAGE
  - BOOKS ON CD
  - MUSIC CDS
  - PHOTOGRAPHS
  - ADULT PAPERBACK
  - NEW NONFICTION
  - DVDS
  - BILLBOARDS
  - GRAPHIC NOVEL
- CHILDREN'S SECTION**
- NONFICTION
  - FICTION
  - BIOGRAPHY
  - OVERSIZE
  - GRAPHIC NOVELS
  - PICTURE BOOKS
  - EASY READERS





# Existing 2nd Floor Plan & Stack Layout (Overflow Books)

- ADULTS SECTION
- REFERENCE
- YOUNG ADULT
- CHILDREN'S SECTION
- NONFICTION
- FCTION
- PICTURE BOOKS







Library Entry & Computer Station



Circulation Desk & Media Behind



Circulation Desk



Circulation Area





Reference Desk



Seating & Public Access Computers



Public Access Computers & Reference Material



Media





Adult (Fiction/Non-Fiction)



Seating & Adult (Fiction/Non-Fiction) Behind



Adult (Fiction/Non-Fiction)



Private Reading Room





Children's Seating Area & Reference Desk



Children's Seating Area



Children's Bookstacks



Children's Seating Area & Bookstacks Behind





Children's Seating Area & Reference Desk



Children's Seating Area



Children's Bookstacks



Children's Seating Area & Bookstacks Behind





Community Room & Kitchenette



Community Room



Community Room



Community Room Kitchenette





Kitchen/Breakroom & Administration Behind



Administration Services



Kitchen/Breakroom



Technical Services



## Existing 1st Floor Plan Problems





## Space Summary

<u>Department/Area</u>	<u>Current Area</u>	<u>Programmed Area</u>	<u>%Change</u>	<u>SF Change</u>
• Circulation	740sf	740sf	0%	0sf
• New Media/Periodicals	465sf	815sf	+75%	350sf
• Reference	445sf	355sf	-20%	-90sf
• Public Access Computers	375sf	375sf	0%	0sf
• Adult Services	2,560sf	2,815sf	+10%	255sf
• Seating/Reading	305sf	365sf	+20%	60sf
• Young Adult	265sf	400sf	+50%	135sf
• Meeting/Community Room	1,540sf	1,910sf	+24%	370sf
• Tech Services	440sf	440sf	0%	0sf
• Administration	3,065sf	3,065sf	0%	0sf
• Children's	1,500sf	2,850sf	+90%	1,350sf



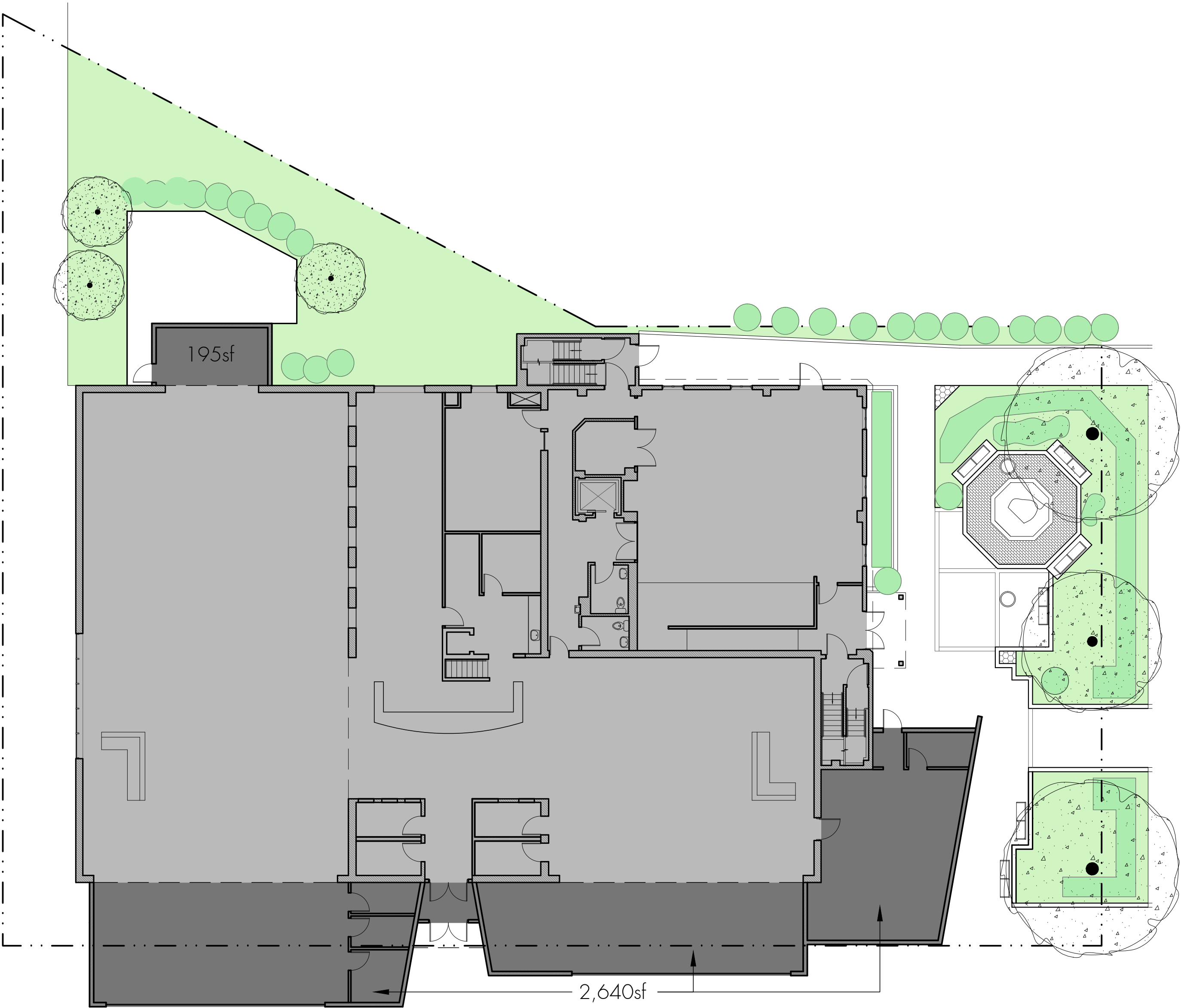
# Existing 1st Floor with Expanded Programmed Department Areas

- CIRCULATION & LIBRARY ENTRY\_740sf
- REFERENCE\_\_\_\_\_355sf
- ADULT\_\_\_\_\_2,815sf
  - NON-FICTION
  - FICTION
  - READING
- MEDIA & PERIODICALS\_\_\_\_\_815sf
- SEATING\_\_\_\_\_365sf
- PUBLIC ACCESS COMPUTERS\_\_\_\_\_375sf
- YOUNG ADULT\_\_\_\_\_400sf
- CHILDREN'S AREA\_\_\_\_\_1,850sf
- COMMUNITY ROOM\_\_\_\_\_1,910sf

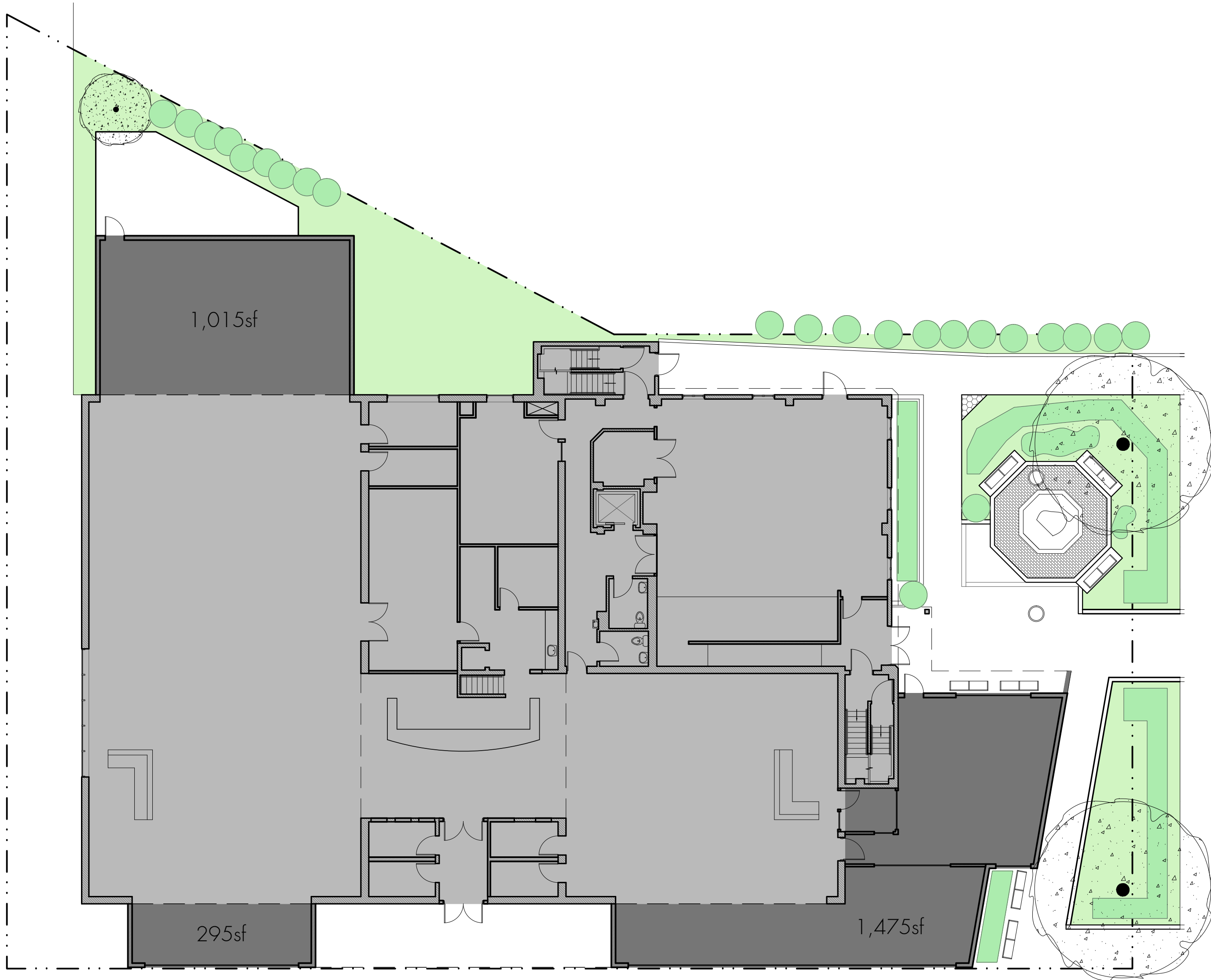




Library Expansion Possibilities (To meet program)

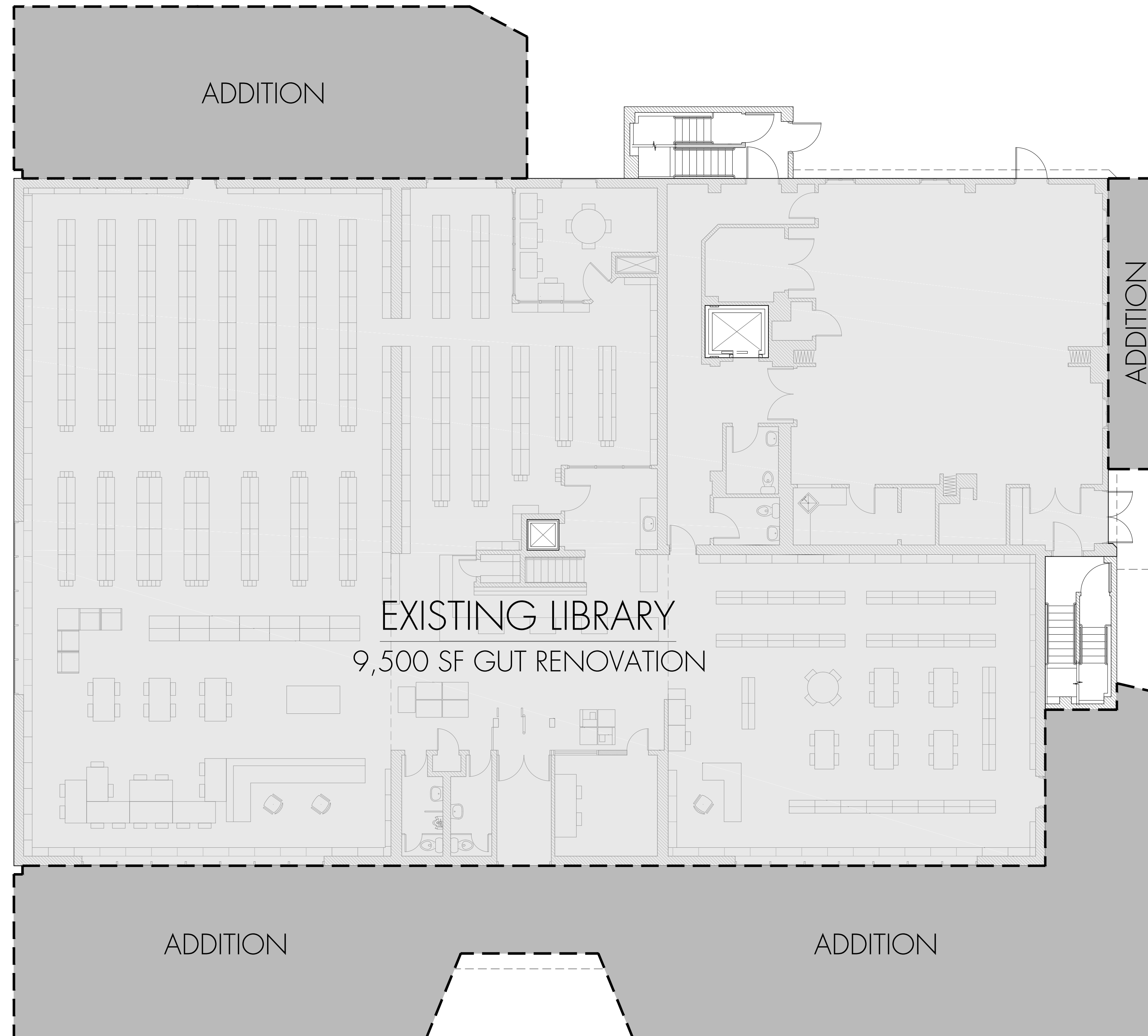


Addition A- 2,835sf  
(Expansion out of Property Line)



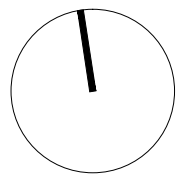
Addition B- 2,785sf  
(Expansion within Property Line)





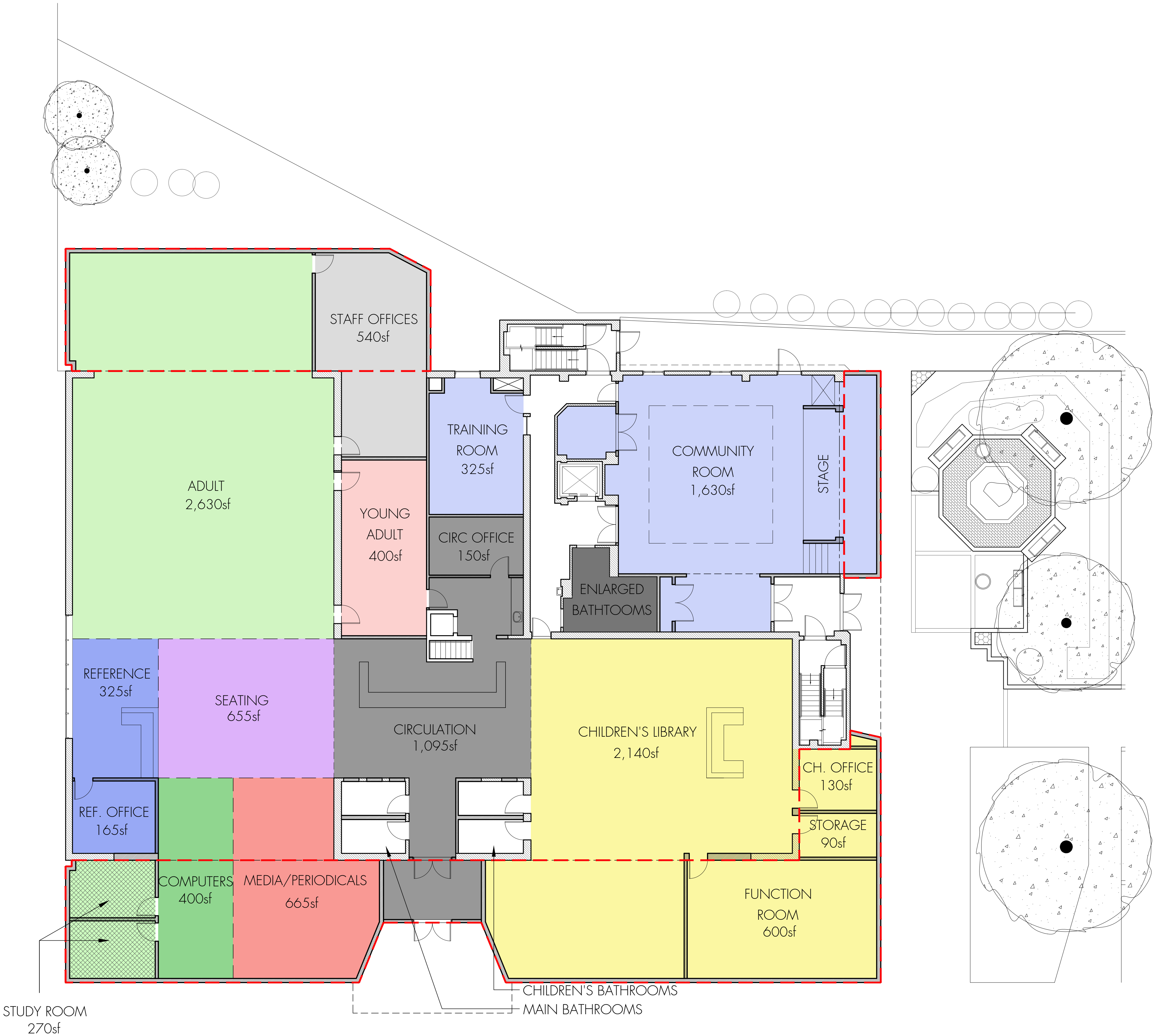


Library Expansion Proposed Layout



CIRCULATION, LIBRARY ENTRY, & OFFICE	1,245sf
REFERENCE & OFFICE	490sf
ADULT	2,900sf
NON-FICTION & FICTION	
STUDY ROOMS	
MEDIA & PERIODICALS	665sf
SEATING	655sf
PUBLIC ACCESS COMPUTERS	400sf
YOUNG ADULT	400sf
CHILDREN'S LIBRARY, FUNCTION ROOM, & OFFICE/STORAGE	3,000sf
COMMUNITY & TRAINING ROOM	1,955sf
STAFF OFFICES	540sf

TOTAL ADDITION +/- 4,000sf



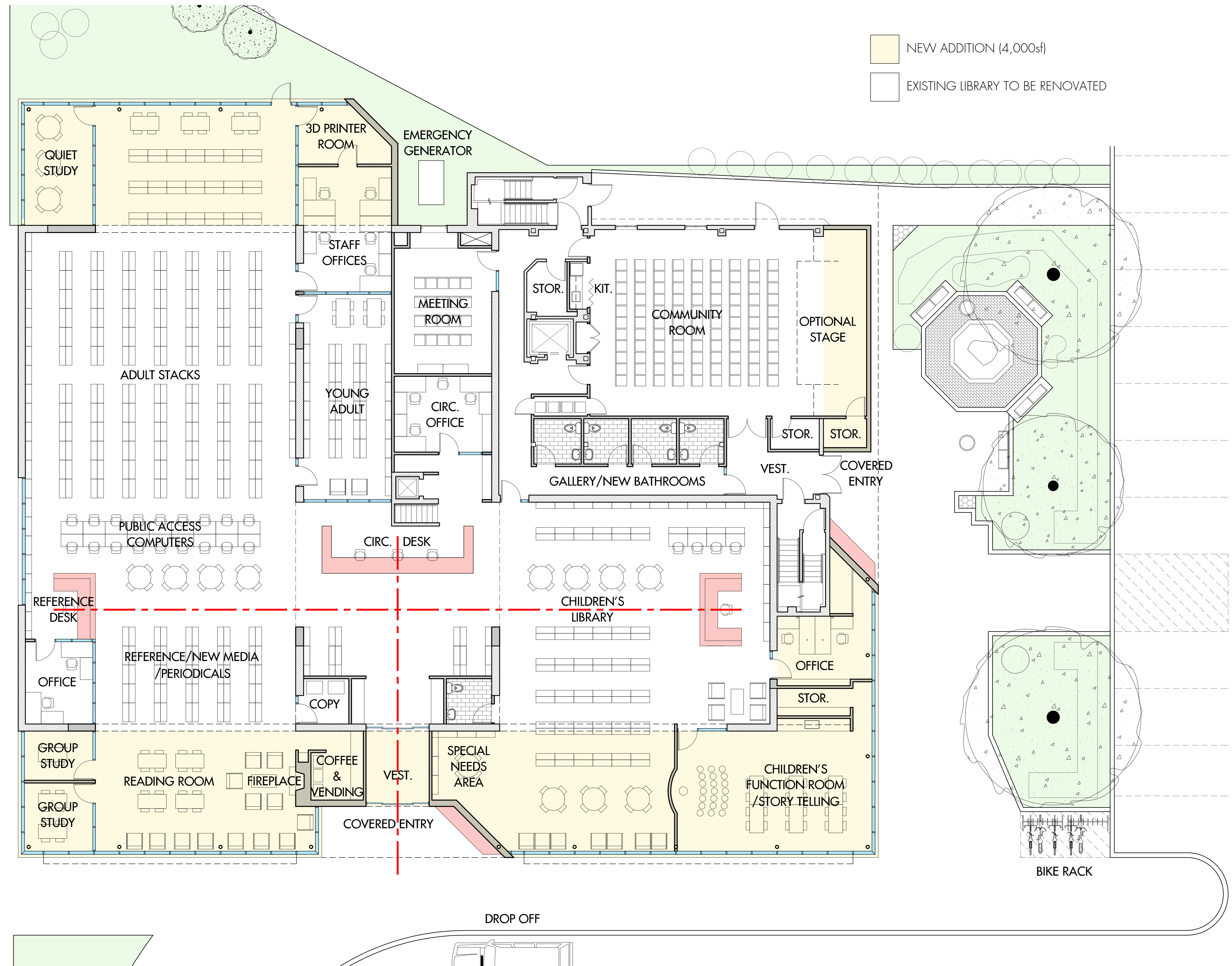


A compass rose with a circle divided into four quadrants by a vertical and a horizontal line. The word "NORTH" is written above the top quadrant. The top quadrant is shaded black, and the bottom quadrant is shaded light gray.

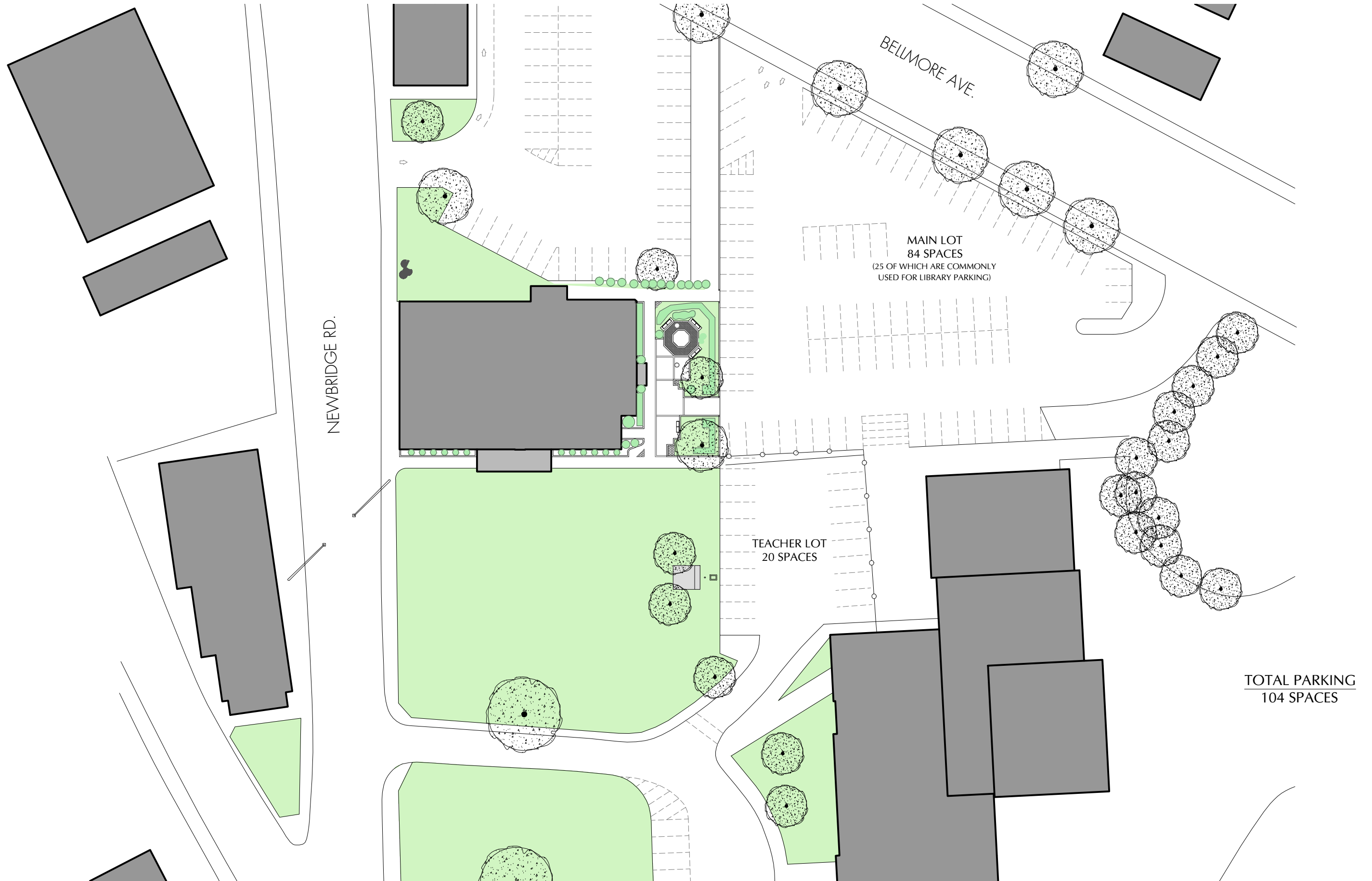
A diagram of a 24-bit bus divided into four 8-bit segments. The segments are labeled 0, 8, 16, and 24 at the top. Each segment is represented by a horizontal bar divided into two rows of four squares. The top row of each segment is shaded gray, and the bottom row is white. The segments are connected by vertical lines.



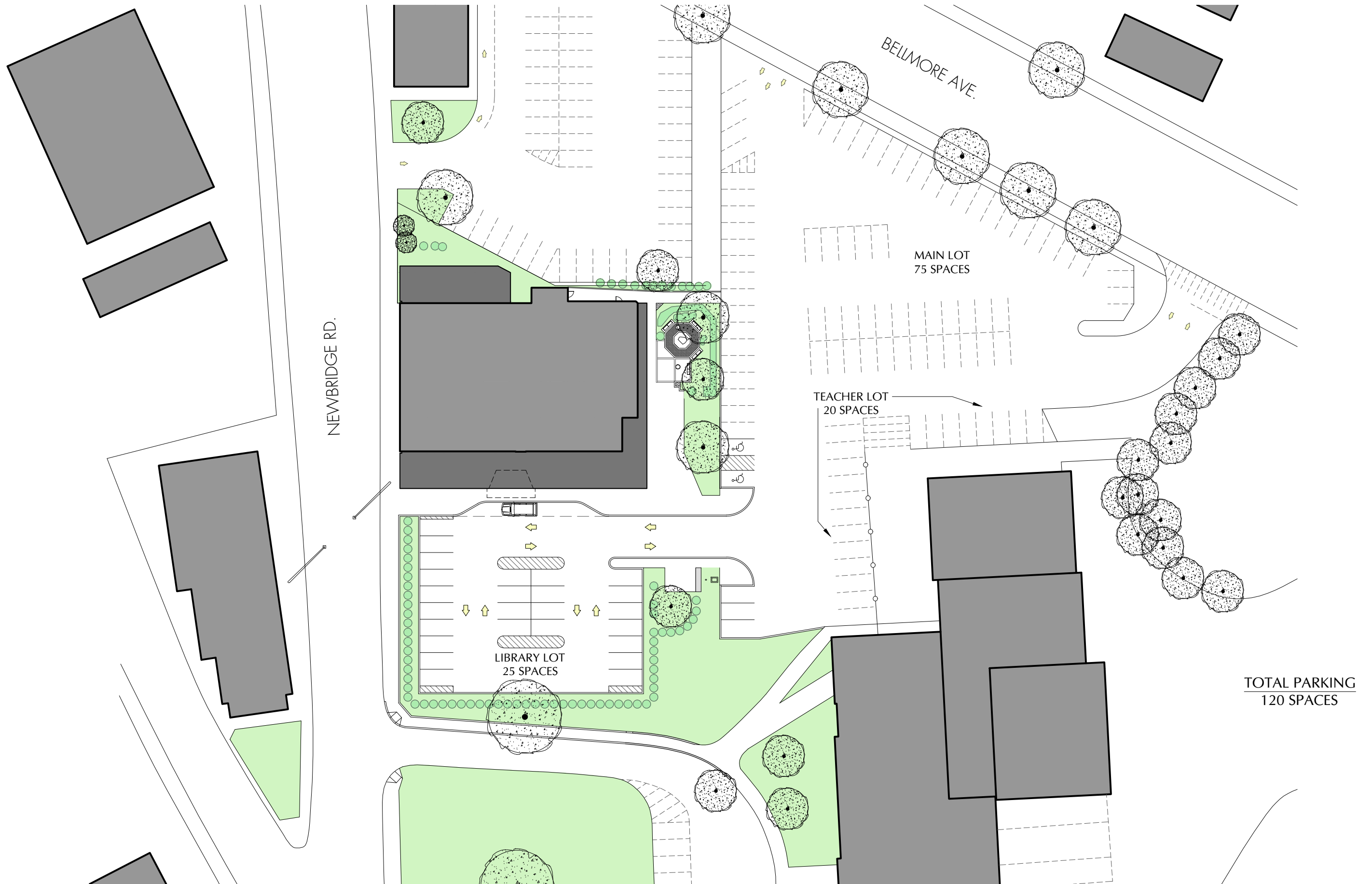
31 March, 2015



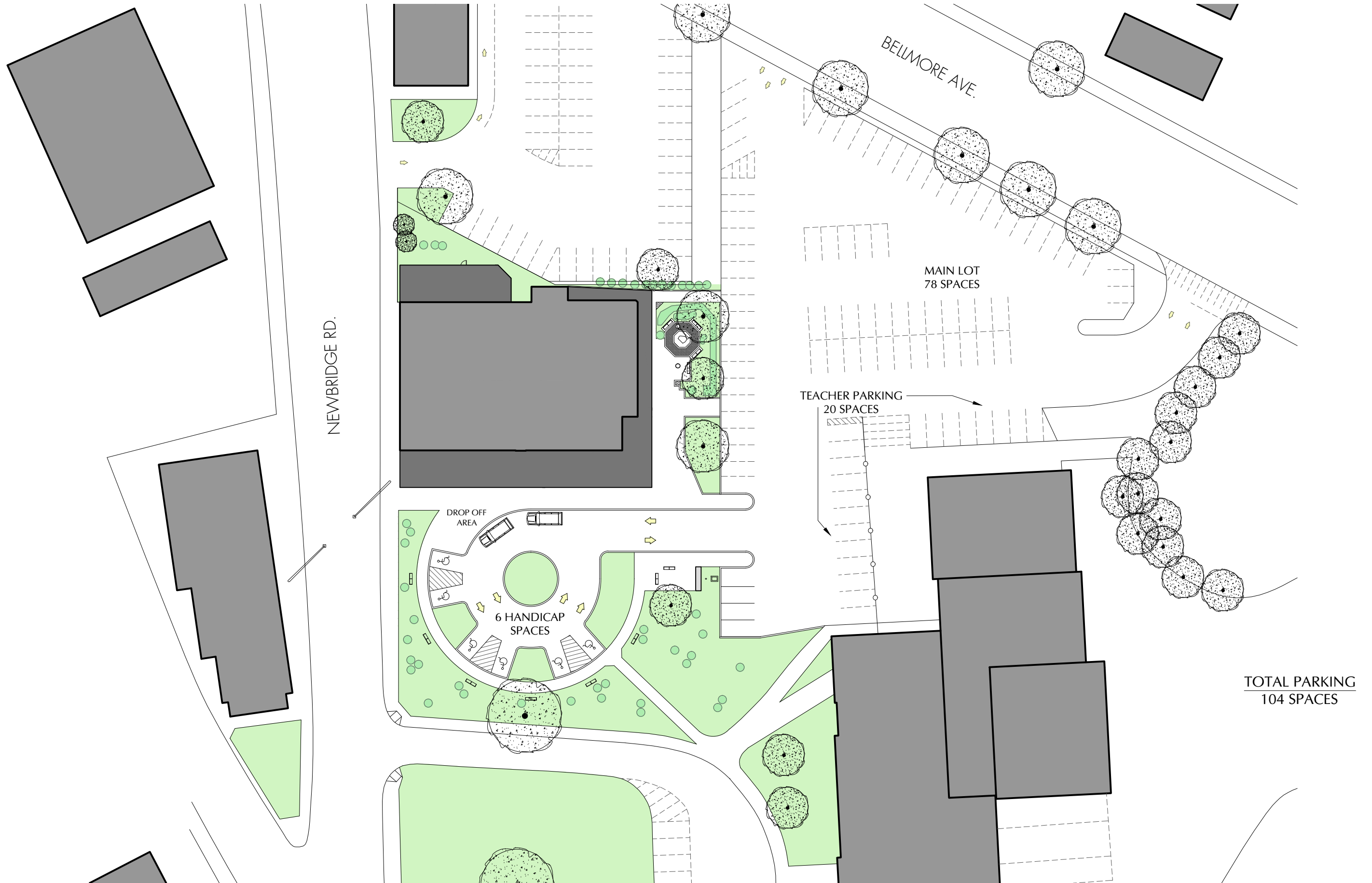




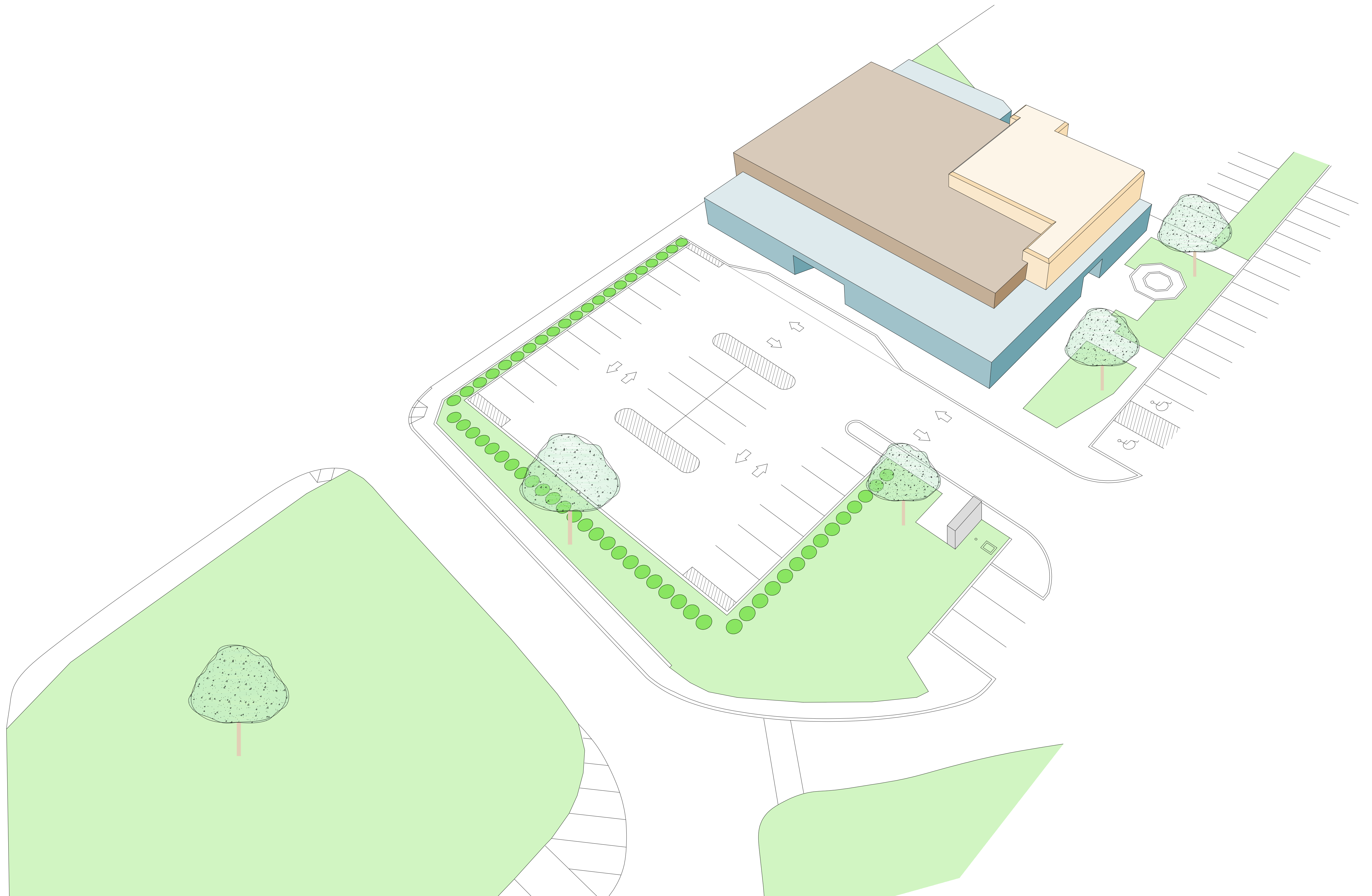








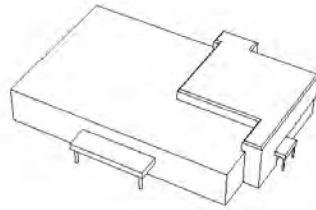






# Library Master Plan

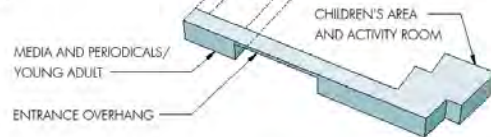
EXISTING LIBRARY



ADULT SECTION



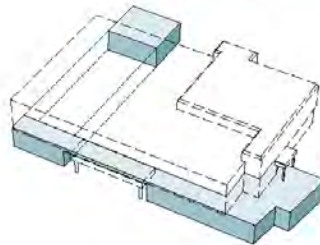
EXPANSION



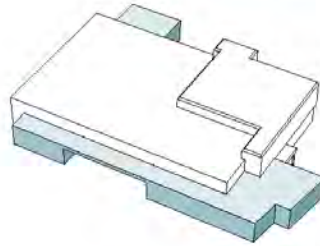
MEDIA AND PERIODICALS/  
YOUNG ADULT

ENTRANCE OVERHANG

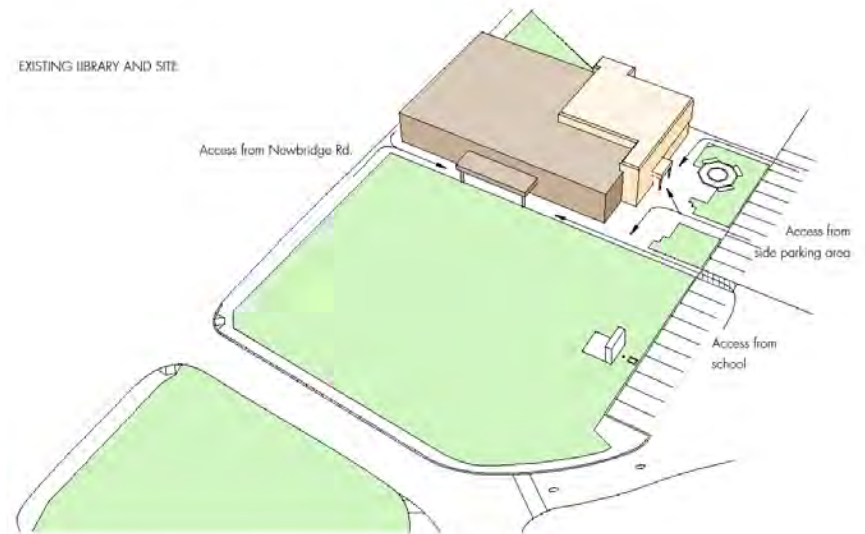
CHILDREN'S AREA  
AND ACTIVITY ROOM



LIBRARY w/ EXPANSION



EXISTING LIBRARY AND SITE



EXISTING LIBRARY WITH EXPANSION  
ADDITION AND SITE











NORTH BELLMORE LIBRARY









NORTH BELLMORE COMMUNITY ROOM







